

# MONTHLY MEMBERSHIP PROGRESS REPORT

LOCATION WISCONSIN

District 27 B2

Results as of: 10/31/2022

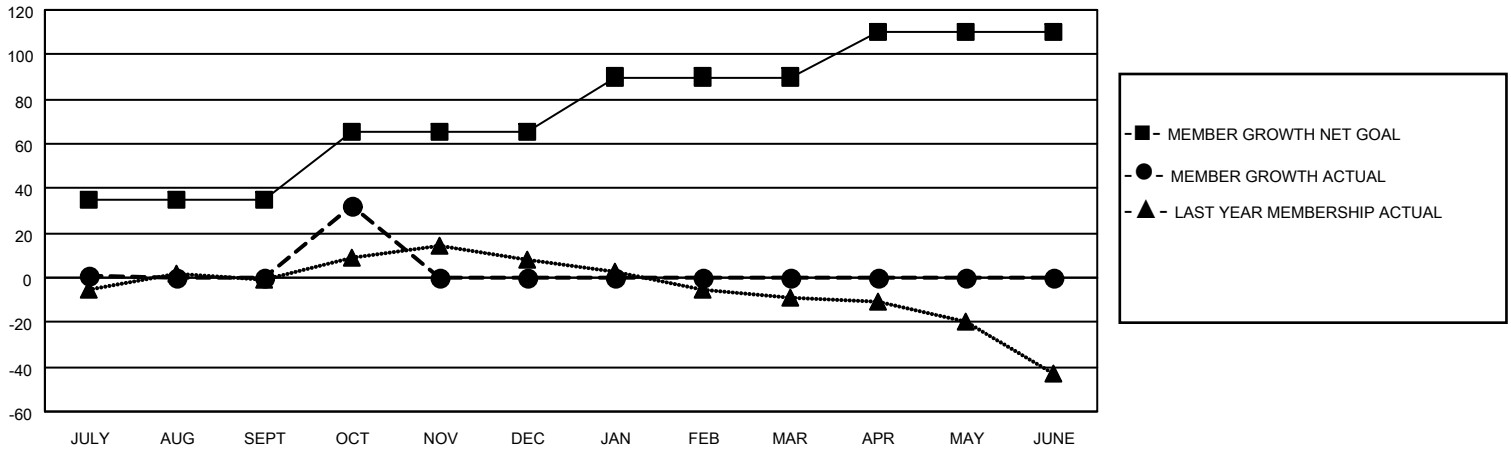
Clubs			
RESULTS FOR 2022-2023			
QUARTER	NEW CLUB GOAL	NEW CLUBS	DROPPED CLUBS
JULY/AUG/SEPT	0	0	0
OCT/NOV/DEC	0	0	0
JAN/FEB/MAR	0	0	0
APR/MAY/JUNE	0	0	0

Members			
RESULTS FOR 2022-2023			
QUARTER	MEMBER GROWTH NET GOAL	MEMBER GROWTH ACTUAL	DROPPED MEMBERS ACTUAL (including transfers)
JULY/AUG/SEPT	35	43	39
OCT/NOV/DEC	30	41	8
JAN/FEB/MAR	25	0	0
APR/MAY/JUNE	20	0	0

**GOALS AND ACTUAL NEW CLUBS CUMULATIVE**



**GOALS AND ACTUAL MEMBERS CUMULATIVE**



DROPPED CLUBS: 0	
<b><u>DROPPED MEMBERS</u></b>	
DECEASED	9
CLUB CANCELLED	0
OTHER	38
<b>TOTAL</b>	<b>47</b>

35 CLUBS OF 67 ADDED 1 OR MORE NEW MEMBERS

[CLICK HERE FOR CUMULATIVE MEMBERSHIP DATA](#)

<u>GENDER DISTRIBUTION</u>	
MALE	1,653 (75.34%)
FEMALE	541 (24.66%)
NON BINARY	0 (0.00%)
PREFER NOT TO ANSWER	0 (0.00%)
<b>TOTAL FAMILY UNIT MEMBERS</b>	<b>372</b>
<b>FAMILY MEMBERS PAYING HALF DUES</b>	<b>187</b>